

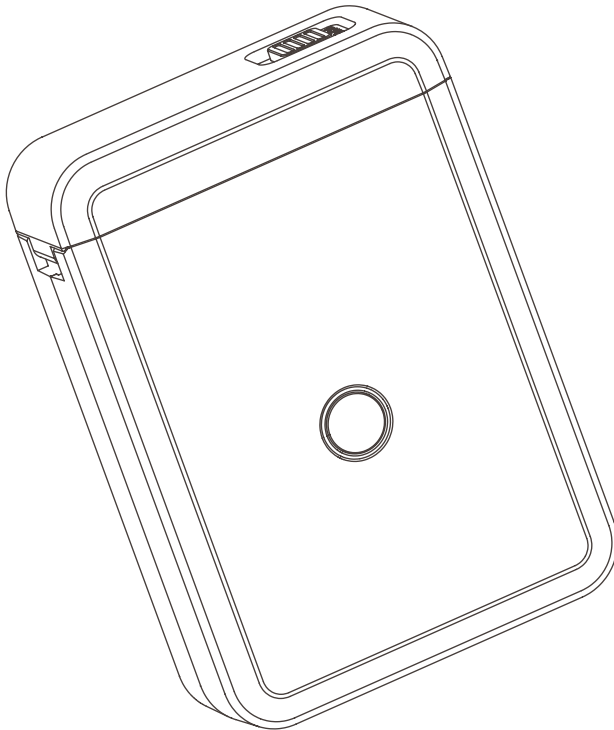


x **NIIMBOT**

URBANWORX

# PORTABLE WIRELESS LABEL PRINTER

UX3TPB (D110)



## INSTRUCTION MANUAL

Please read this manual carefully before using, and keep it for future reference.



# CONTENTS

General Safety	4
Product Overview	6
Setup	7
Inserting Label into printer	7
Power on Label Printer	9
Download and Install NIIMBO app	9
Connecting to app	10
How to use NIIMBO app	11
Designing the label and Printing	11
FAQs	13
Cleaning	15
Specifications	Last Page
Support	Last Page

# GENERAL SAFETY

Read this manual thoroughly before you start using the product. Store this manual, warranty card, your receipt and the product packaging. The safety precautions instructions reduces the risk of fire, electric shock and injury when correctly complied to.

Please follow all instructions and take notice of all warnings.

## **To reduce the risk of injury:**

- Do not heat, open, or dispose of battery pack in fire.
- Do not allow metal objects to touch the battery on the device.
- Do not expose battery pack to excessive heat.

## **WARNING:**

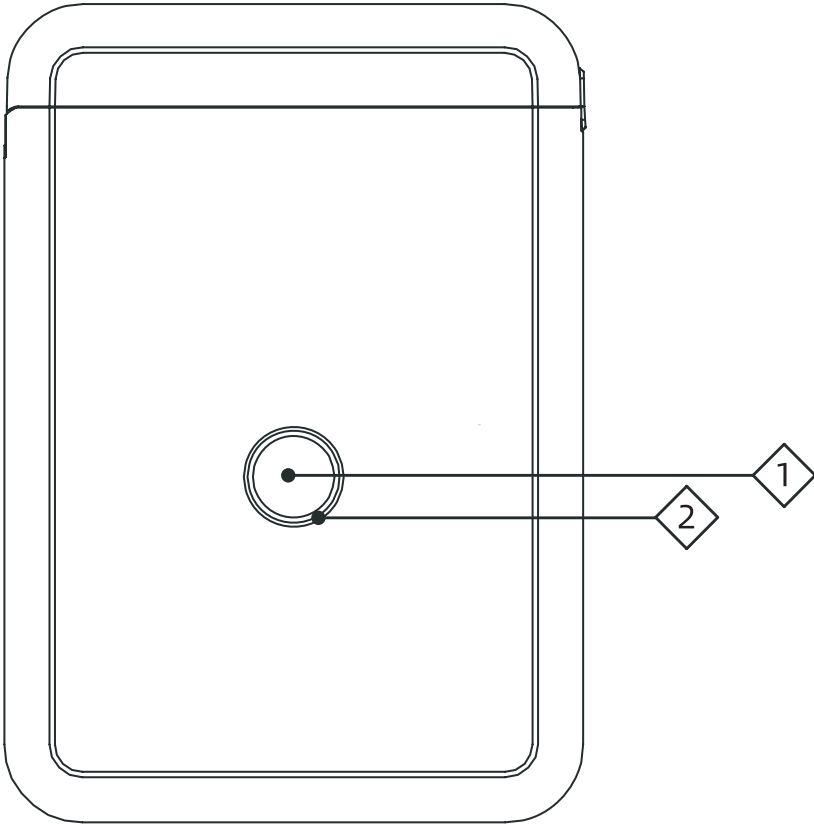
Be cautious when using you product as part of your active lifestyle. Always be aware of your surroundings to avoid injury to yourself and others.

- Safely keep this product and accessories out of the reach of children to prevent danger.
- Do not open the label printer lid when the machine is printing.
- Make sure that the paper bin is clean before using. If there is any residue inside, it may cause damage to the print head while printing.
- Wipe the print head and paper bin gently with a clean, soft cloth. Solutes, corrosive chemicals , or detergents such as benzene or thinners are prohibited.
- Power off the printer immediately when it is malfunctioning.
- Please do not disassemble the printer. Otherwise, the printer can not be returned or replaced.
- After printing, the print head may be still hot. Do not touch it to avoid burns.
- Use Urbanworx label range, otherwise, poor print quality or damage to the printer may happen.
- Charge the battery in a cool and airy room.

# GENERAL SAFETY (Cont.)

- Do not expose the printer to high-temperature and high-humidity environments, or do not expose them to water to avoid short circuits which can cause the battery to heat, smoke, deform, damage, or even explode.
- When you notice smoke or an odor from your printer turn off the power immediately and take care to avoid burns.
- Do not use the printer where there are Inflammable substances like gas stations and fuel warehouses.

# PRODUCT OVERVIEW

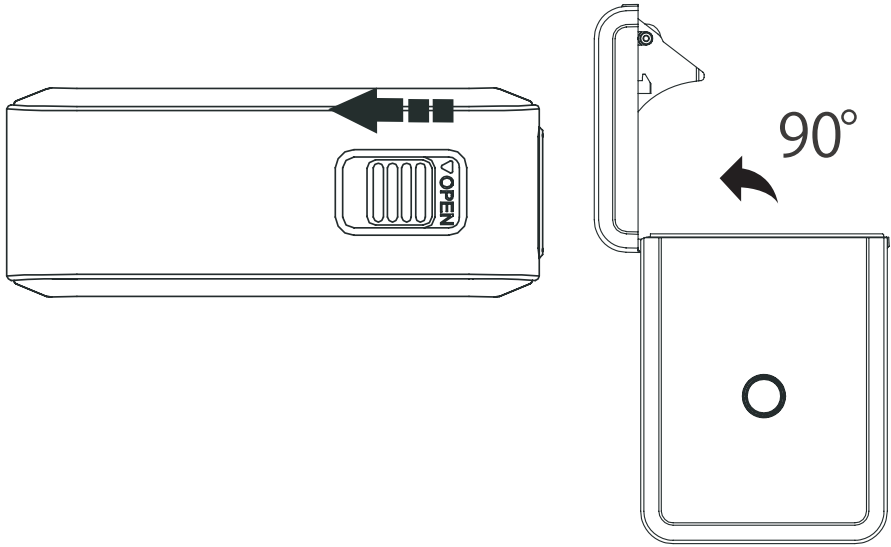


1 Power Button

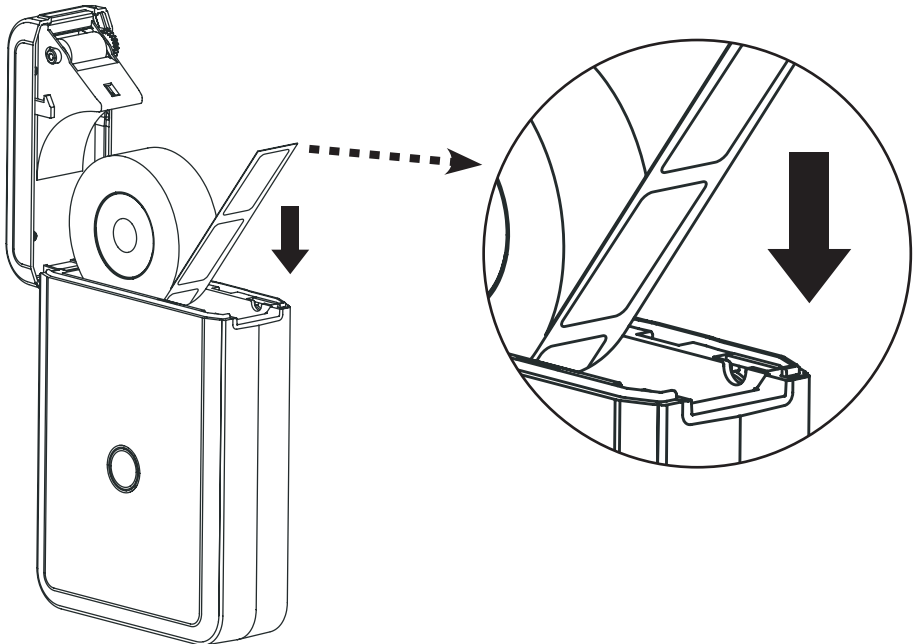
2 Indicator light

# SETUP

1. At the Top of the Unit, Slide the OPEN button to the left to open.

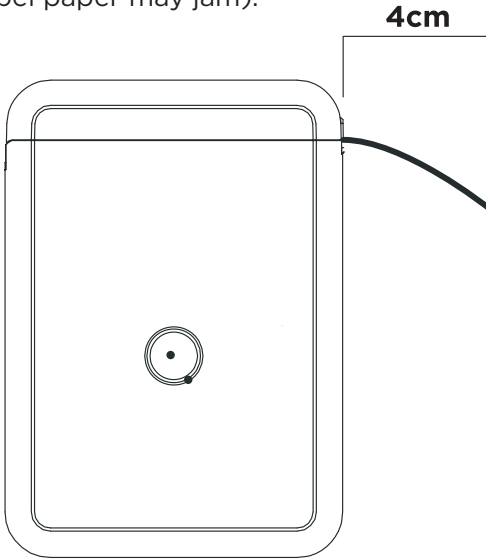


2. Slide the Label (included) into the top. Make sure the labels are facing downwards as indicated below:

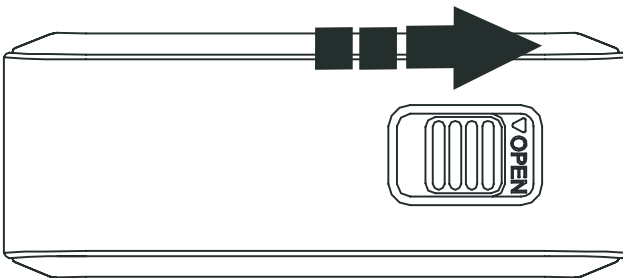


# SETUP (Cont.)

3. Close the Lid while making sure about 4cm of label is hanging on the outside. This ensures that printing proceeds smoothly (if too short, label paper may jam).



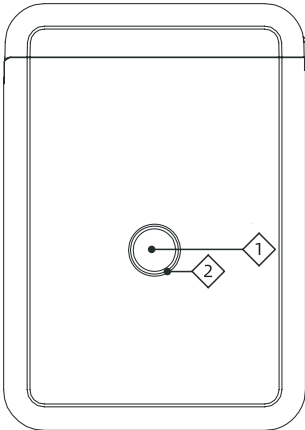
4. When closing the lid of the label printer, make sure to lock the button by sliding the OPEN button to the right. See below:





# SETUP (Cont.)

5. Now that the label has been installed into the label printer. Press and hold the power button for up to 5 seconds to power on. *(if product does not turn on, be sure to charge it with the USB-C cable provided for 20mins).*



1 Power Button

2 Indicator light

Indicator light	Status	Instruction
Blue	Flash slowly	Bluetooth not connected
Blue	Flash quickly	During printing and charging
Blue	Static/On	Bluetooth connected and battery fully charged
Red	Flash slowly	Bluetooth not connected and low battery
Red	Flash quickly	Printing and charging with low battery
Red	Static/On	Bluetooth connected and low battery

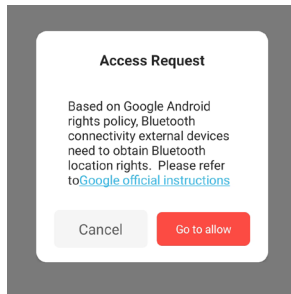
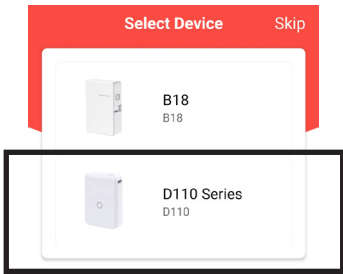
6. Now that its powered, you can commence connecting the printer to the NIIMBOT app.

The **NIIMBOT app** can be downloaded from either Google Play Store or iOS App store:



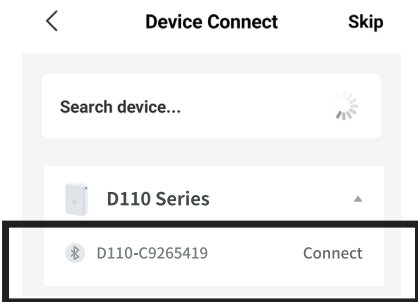
# SETUP (Cont.)

7. Once you have downloaded and installed the **NIIMBOT** app. Make sure that your smart device **BLUETOOTH** is turned **ON**.
8. Open the **NIIMBOT** app. It will automatically come up with a list of **PRINTER devices** to connect to.
  - A. Select **D110 Series**, as indicated:
  - B. Select “**Go to allow**” to proceed to next step.

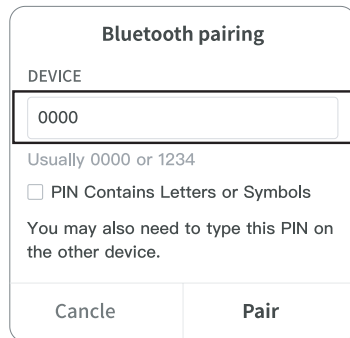


Selecting Cancel will stop the connection process.

- C. Select the product ID that appears under **D110 Series** as shown below:

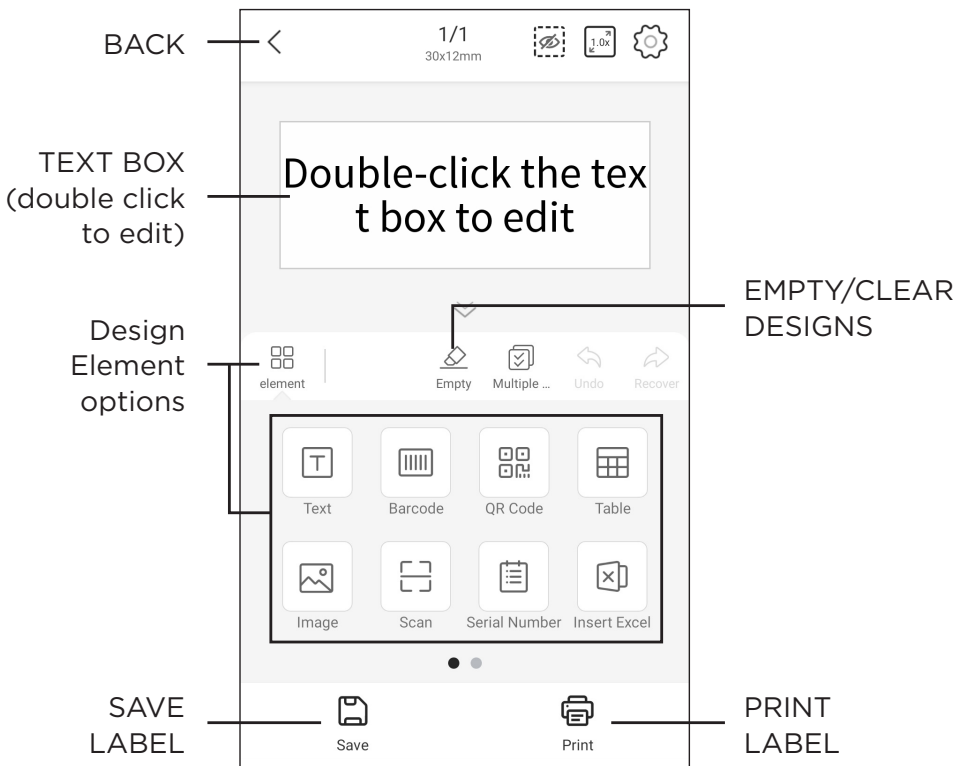


- D. If PIN is required, enter “0000” and select **PAIR**.



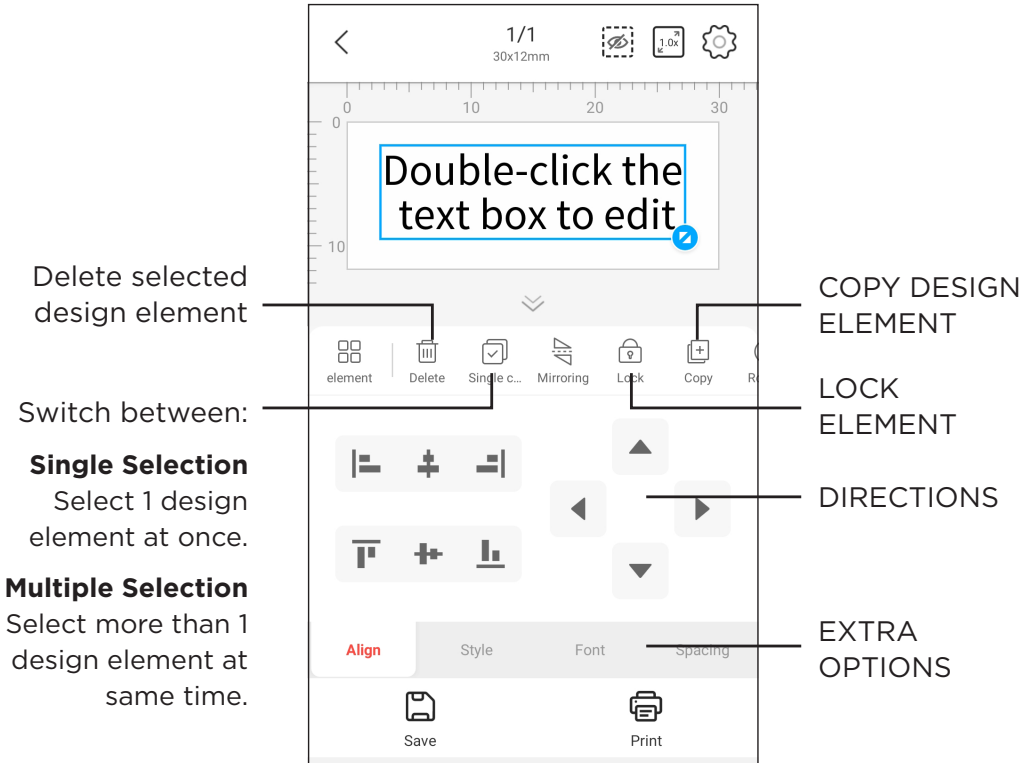
# HOW TO USE

1. After completing setup, Open the app.
2. Check to make sure Label Printer is “**Connected**” as indicated on top right of app screen.
3. Select “**NEW**” as shown on bottom of the app screen.
  - Select “**Label Name**” and name your Label you are to print.
  - Then Select the “**NEW**” button at bottom of screen.
4. You will now enter the design part of the Label. **(see below image)**
  - Double click the text box to enter your own wording.
  - Click and drag the box or design elements to adjust label positioning.



# HOW TO USE

5. When Selecting an Element, Additional options will occur.  
See below image for reference:



6. When you are happy to finish and print, see below options:  
Select **SAVE** to save your label to print later.  
Select **PRINT** to immediately print your label.

7. Print Setup
- **Printer** - Make sure correct Label Printer is selected.
  - **Print Copy** - Choose how many labels you want printed of your design.
  - **Print Density** - Recommended to leave as 1.
  - Select **PRINT** button to start Printing.

# FAQs

- 1. Question: Is there one roll of label paper offered for free? What style is it?**  
**Answer:** UX3TPB is sold with a roll of white label paper inside the machine. The label is 15 \*30 mm.
- 2. Question: Do I need to register to use the machine?**  
**Answer:** Registration is not necessary. Registered account can allow you enjoy the function of saving and retrieving label templates.
- 3. Question: Do I need to register to use the machine?**  
**Answer:** Registration is not necessary. Registered account can enjoy the function of saving and retrieving label templates.
- 4. Question: Will the machine automatically shut down?**  
**Answer:** After being disconnected from Bluetooth or the app is not used for 15 minutes, the machine will automatically shut down, saving power and protecting the battery.
- 5. Question: Why does the machine work normally but keep printing blank paper?**  
**Answer:** It may be because the label paper is laid reversely, please keep the label sticker side down as indicated on PAGE 6 / #2
- 6. Question: Why does the machine keep feeding paper?**  
**Answer:**

  - a. It may be because there is label or residues sticking on the detectors inside the lid cover or in the paper bin.
  - b. It may be because there is label or residues sticking on the print head. The label paper failed to be detected.
  - c. Label Printer is only suitable to use labels included with it at purchase and the UX3PL4P Urbanworx 4 Pack labels (sold separately). Other Branded label paper will not work and cause unsatisfied printing results.
  - d. The detectors are malfunctioning, please contact support.

# FAQs (cont.)

**7. Question: Why does the printout look gray or in a light color?**

**Answer:**

- a. The label used is not NiiMbot label range.
- b. The actual number of label printed exceeds the number which is preset.
- c. The chip is malfunctioning.

**8. Question: Why the machine cannot be searched by the app?**

**Answer:**

- a. If the machine is being charged, please unplug it and try to search for it again.
- b. Bluetooth responses slowly. Please re-open the app and reboot the machine and try to connect again.
- c. Please update or re-install the app and try again or please contact the customer service.

**9. Question: In what situation does the error “cover is open” appear?**

**Answer:** There are possibilities as follows:

- a. The cover is not closed properly. Please repeat opening and closing the cover for several times.
- b. Label paper is laid reversely. Please load it correctly.
- c. There are residues left in the paper bin or on the print head. Please remove the residues or clean the print head properly.
- d. Turbulence in transit may result in loose wiring inside the machine. Please contact customer service.

# CLEANING

1. Turn off the Label Printer
2. Wait for the Label Printer to cool down completely after a print. Open the cover to find the Print head.
3. Clean out the dust or residues with cotton bal/bud.
4. Close the cover.

# SPECIFICATIONS

Color	White
Material	ABS+PC
Printing method	Thermal
Resolution	203dpi
Printing speed	15mm/s~20mm/s
Label width range	15mm
Frequency	2.4G
Connection	Bluetooth 4.0
Barcode printing	Supports barcodes and QR codes
Working temperature	-10°C — 50°C
Battery Type	1200mAh Lithium battery
Interface	Type-c
Endurance	Work continuously for 4~5 hours

# URBANWORX

**CUSTOMER HELPLINE:**

[info@ayonz.com](mailto:info@ayonz.com)

**DISTRIBUTED BY:**

Ayonz Pty Ltd