

URBANWORX

SMART BODY SCALE

UXLibra-8B



INSTRUCTION MANUAL

Please read this manual carefully before using, and keep it for future reference.

CONTENTS

General Safety	4
Unit of Measure	6
Batteries	6
How to use	6
Product Setup	7
App Download	7
Connect App to Smart device process	8
Extra app information	13
Troubleshooting	13
Specification	Last Page
Customer Support	Last Page

GENERAL SAFETY

Read this manual thoroughly before you start using the Body Scale. Store this manual, the completed warranty card, your receipt and the product packaging.

Please follow all instructions and take notice of all warnings.

- The apparatus shall not be exposed to dripping or splashing and no objects filled with liquids, such as vases, shall be placed on the product. Dry location use only.
- No naked flame source, such as candles, should be placed on the product.
- This appliance is not to be used by persons (including children) with reduced physical, sensor or mental capabilities, or lack of experience and knowledge, unless they have been given supervision or instruction.
Children being supervised not to play with the appliance.
- Do not open the housing; instead, have a qualified workshop for this. Liability and warranty claims are waived in the event of repairs performed by a user, improper connection or incorrect operation.
- Never jump or stomp on the scale.
- Do not try to disassemble the scale.
- Handle with care and avoid dropping the scale while moving to prevent from accidentally damaging the scale.
- Do not allow metal objects to touch or pierce the battery in the device.
- Do not expose batteries to excessive heat and direct sunlight.

WARNING - KEEP BATTERIES OUT OF REACH OF CHILDREN

- Examine devices and make sure the battery compartment is correctly secured, e.g. that the screw or other mechanical fastener is tightened. Do not use if compartment is not secure.

GENERAL SAFETY (CONT.)

- If you notice any unusual odors or smoke around the unit, immediately turn off the device and contact the service center. Failure to do so may result in fire or electric shock.
- To maintain the product do not use any chemical or cleaning agent or wet cloth, please only ensure to utilize a dry cloth to wipe it down from marks or dust and only after unplugging the product from the power socket.
- Please ensure to contact our call center for any repair or service required for the products.

Please make sure upon positioning this product, the place is:

- Not wet or damp and Well ventilated
- Away from direct heaters.
- Away from splashes or food.
- Protected from excessive dust or grease.
- Do not place the Product near heat sources such as radiators, stoves or other audio visual equipment that produce heat.
- Do not place small metallic objects on top of the unit.

CAUTION

1. To ensure accuracy, it is recommended measure your weight at the same time every night or morning.
2. Please make sure new batteries are inserted when “LO” appears on the LCD screen which indicates batteries are out of power.
3. “Err” shows on LCD then indicates overload or error in taking weight measurement.

**NOT FOR BUSINESS COUNTING
FOR PERSONAL REFERENCE ONLY.**

GENERAL SAFETY (CONT.)

Before first use

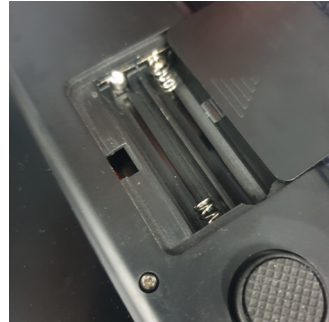
- Unpack the product and accessories and ensure all parts of the product are undamaged and in good working order.
- Plastic wrapping can be a suffocation hazard for babies and young children, so ensure all packaging materials are out of their reach and disposed of safely.
- Ensure the product is not exposed to direct sunlight or placed near a heater or other heat source.

UNIT OF MEASURE

To change the unit of measurement to either KG or LB, turn the Smart body scale over and press the UNIT button located near the battery compartment. View the front screen while press to see which UNIT body weight is selected.

BATTERIES

For the Smart body scale to work, 2 x AAA batteries (included) must be placed into the battery compartment located at the back of the unit.



HOW TO USE

- Stand with both feet on the positioned body scale, the device will automatically turn on and display the weight of the user after a few seconds.
- When stepping off the device, the body scale will turn off after a few seconds.

**NOT FOR BUSINESS COUNTING
FOR PERSONAL REFERENCE ONLY.**

PRODUCT SETUP (APP CONTROL)

Make sure to download and install the application before proceeding

- Scan the below QR codes to download the app:



The image shows two download options for the app. On the left, there is a white button with an orange Apple logo and the text "Download on the App Store". Below it is a QR code. On the right, there is a green button with a silver play button icon and the text "Google play". Below it is another QR code. The entire section has an orange background.

If you cannot scan the QR codes, please search for **OKOKInternational** app for body scales, see below app image:



OKOK·International

OKOK TECHNOLOGY

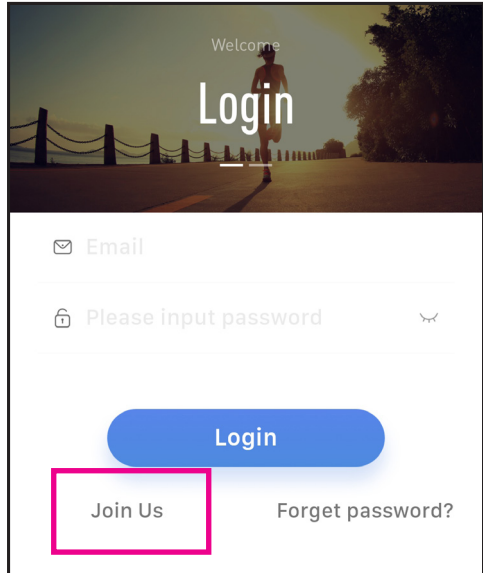
**NOT FOR BUSINESS COUNTING
FOR PERSONAL REFERENCE ONLY.**

PRODUCT SETUP (APP CONTROL)

Once you have downloaded and installed the app, please open the app and follow the below steps.

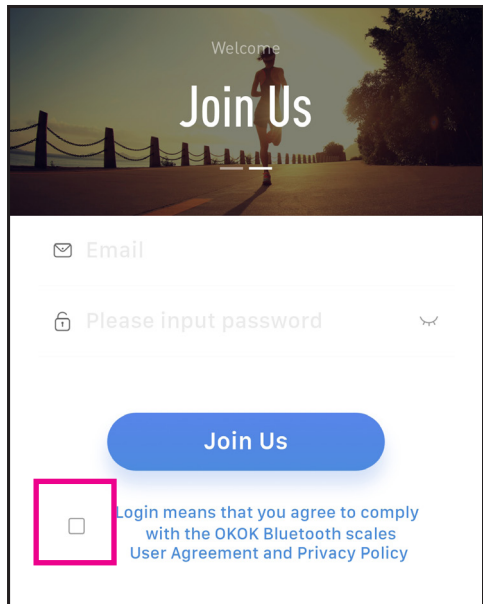
STEP 1

When you open the app, you must setup an account in order to connect to your smart body scale. If you do not have an account, please select “JOIN US”.



STEP 2

Enter in an email address and password that you will remember to create an account, before selecting “JOIN US” you must tick the box accepting the user agreement and privacy policy in order to proceed.



PRODUCT SETUP (APP CONTROL) (Cont.)

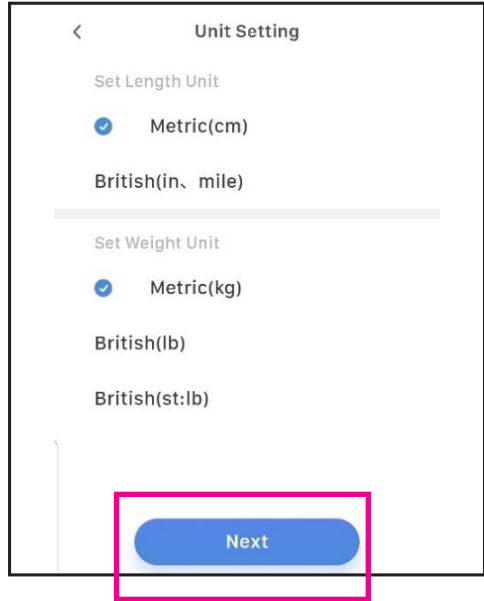
STEP 3

Select your metrics you want to use with your app.

CM length unit (recommended)

KG weight unit (recommended)

Once selected, press “NEXT”.

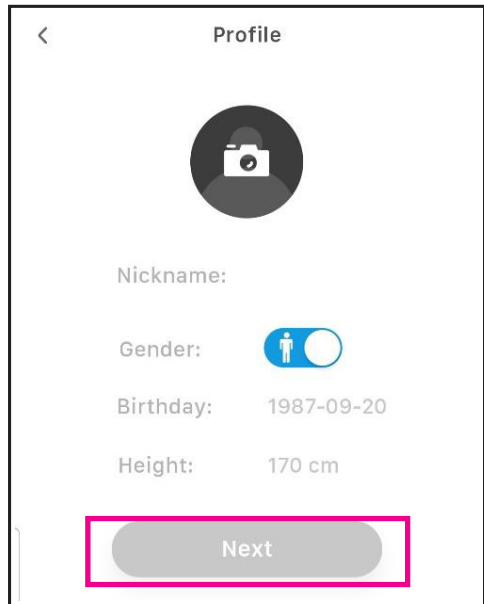


STEP 4

Fill in your information, nickname, gender, birthday and the height.

Height is important as it contributes to statistics the body scale provides to you.

Once completed, select “NEXT”.

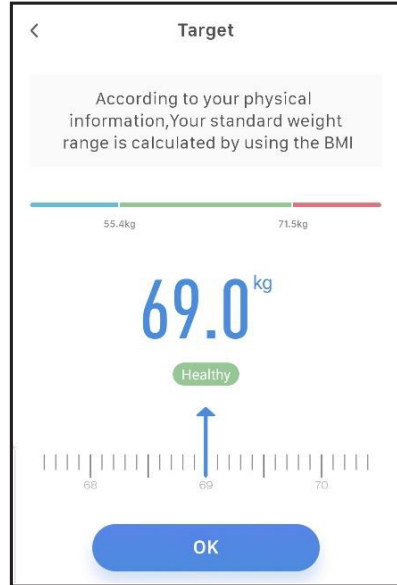


PRODUCT SETUP (APP CONTROL) (Cont.)

STEP 5

Scroll across to the left or right to select your desired weight goal you want to achieve.

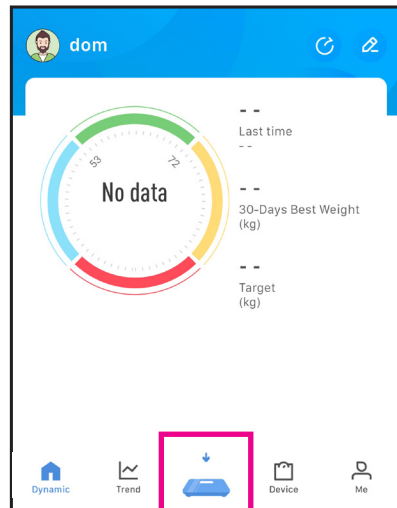
Once your target weight is set, press “OK” to proceed.



STEP 6

Now that you have entered the DYNAMIC dashboard. No statistics will be displayed as the Smart body scale has not measured your weight yet.

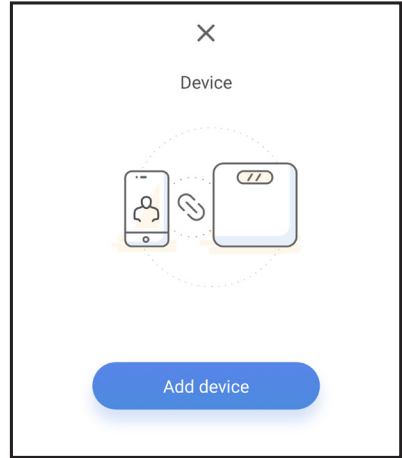
Press the Blue Scale icon at the bottom of app screen to enter the next page and begin weighing process.



PRODUCT SETUP (APP CONTROL) (Cont.)

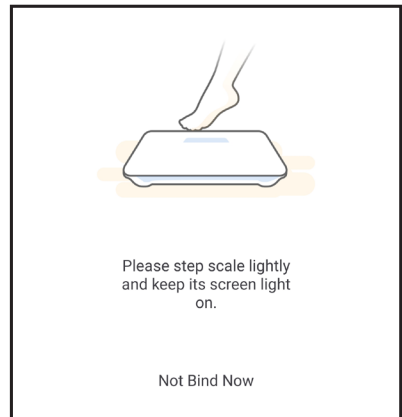
STEP 7

Select “ADD DEVICE” to begin connect process of your smart device and Smart Body Scale.



STEP 8

You can now step on scale lightly to turn on, then proceed to STAND with both feet on the Smart body Scale.

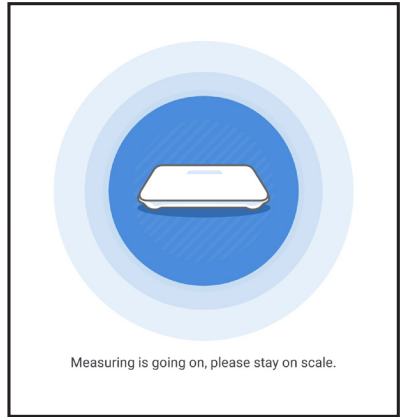


PRODUCT SETUP (APP CONTROL) (Cont.)

STEP 9

Once the screen lights up, STAND with both feet on the Smart Body Scale.

PLEASE MAKE SURE TO REMOVE SHOES AND SOCKS. STAND WITH BOTH FEET BARE SO THAT THE SMART BODY SCALE CAN MEASURE YOUR 12 BODY COMPOSITIONS



If you don't follow above instructions, then the Smart Body Scale will not be able to measure your 12 body compositions with either Socks or Shoes on.

STAY standing with both feet on the smart body scale until it completes reading your weight. Once Completed, it will take you straight to DYNAMIC dashboard screen with statistics of your body. (see below)



**NOT FOR BUSINESS COUNTING
FOR PERSONAL REFERENCE ONLY.**

PRODUCT SETUP (APP CONTROL) (Cont.)

The application offers the presentation of such parameters as weight, BMI (Body Mass Index - Weight to growth ratio), percentage of body fat, muscles, water, and visceral body fat (visceral fat is the fat found on organs, not directly under the skin, bone mass and resting metabolism (the minimum amount of calories to be delivered to the body per day).

Additionally, during subsequent measurements the difference in weight will appear in relation to the previous (last) measurement.

In addition, you can enable the presentation of additional parameter called HEALTH INDEX (settings > health index). These are the amount of protein in the body, obesity level (difference between actual and ideal weight), biological age (presents the condition of the body calculated on the basis of measurements made), LBM (lean body mass - body weight without fat).

CLEANING

Cleaning should only be carried out when the device is switched off and cooled down. The device may only be cleaned with a dry cloth or paper towel.

Do not immerse the device in water. To clean and disinfect the electrodes and the surface, use a cloth. Do not use water or any other liquids to clean the device.

TROUBLESHOOTING

ERROR MESSAGES	MEANING
Lo	Battery is low please replace.
Err	Measurement problem, Re-measure accurately stepping onto and standing still on the scale. Weight exceeds over 180KG.
Err2	Problem with measurement of body composition. Re-measure by standing on the scale with bare feet.
FATL	Measurement shows body percentage fat is less than 5%
FATH	Measurement shows that percentage of body fat is higher than 50%

Some problems may be caused by minor faults that you can fix yourself. To do so, follow the instructions in the following table. If it is still not possible to resolve the problem, contact our call centre at info@ayonz.com.

Do not attempt to open and repair the unit yourself.

SPECIFICATIONS

Capacity	180kg/396LG
GRADUATION	d=100g/0.2LB
BATTERIES	2 x AAA (included)
WEIGHTS	Net: 1.3 kg / Gross: 1.54 kg
MEASUREMENT	300 (w) x 300 (d) x 21 (h) mm

URBANWORX

CUSTOMER HELPLINE: info@ayonz.com

DISTRIBUTED BY: Ayzon Pty Ltd