

# UX URBANWORX

## NON-CONTACT INFRARED THERMOMETER

MODEL: JXB-178



**NOTE:**  
You must read this instruction manual completely before use and follow all instructions. Keep the instructions for later use. You must check the device functions according to this instruction manual prior to each use and only use this device if it is in proper working condition.

### CONTENTS

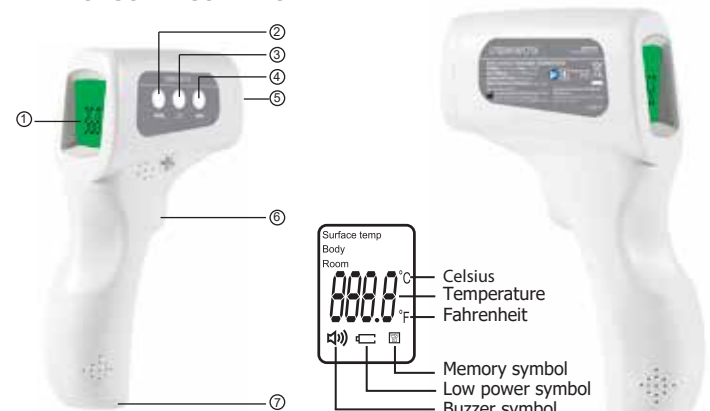
I. INTENDED USE .....	1
II. WARNINGS AND PRECAUTIONS .....	1
III. PRODUCT DESCRIPTION .....	1
IV. HOW TO USE YOUR NON-CONTACT INFRARED THERMOMETER .....	2
V. TURNING ON AND SETTING THE THERMOMETER .....	2
VI. TECHNICAL SPECIFICATIONS .....	3
VII. BATTERIES .....	3
IX. CLEANING AND MAINTENANCE .....	4
X. GUIDE LINES .....	4
XI. CLASSIFICATION .....	4
XII. TROUBLESHOOTING .....	4
XIII. SIGNS AND SYMBOLS .....	5
XIV. EMC DECLARATION .....	5

**I. INTENDED USE**  
This device is an infrared thermometer that is intended to measure the forehead temperature of individuals of all ages without making contact with the individual whose temperature is being taken. It can be used by consumers in household environment and doctor in clinic as reference.

**II. WARNINGS AND PRECAUTIONS**

- Only use this thermometer once you have read and understood the instruction for use.
- Only use this thermometer for the specific purpose described in the instruction manual. Any misuse will void the warranty.
- This thermometer may be used for professional purposes or for personal home use. Assistance as needed. Do not self-diagnose or self-medicate on the basis of a self-measurement without consulting your doctor and obtaining your doctor's approval. Specially, do not take any new medication or change the type and/or dosage of any existing medication without consulting your doctor and obtaining your doctor's approval.
- Children must not be allowed to use this thermometer. Medical device is not toy.
- If this thermometer is stored in a location that is cooler or warmer than where it is being used, let it sit in the patient's room for at least 30 minutes before taking the measurement.
- After physical activity, a bath or spending time outdoors, wait approx. 30 minutes before you take a measurement on your forehead.
- To ensure an accurate measurement, this device must only be used indoors when the ambient temperature range is between 10°C (50°F) and 40°C (104°F).
- This thermometer must be kept in a clean, dry area.
- Do not expose this thermometer to electric shocks.
- Do not expose this thermometer to extreme temperature conditions of greater than 55°C (131°F) or less than -20°C (-4°F).
- Do not use this thermometer in relative humidity higher than 85%.
- Do not expose the thermometer to direct sunlight, extremely high or low temperatures, dirt or dust.
- Do not drop this thermometer.
- DO NOT TOUCH THE GLASS OF THE INFRARED SENSOR WITH YOUR FINGERS AS IT IS EXTREMELY FRAGILE AND COULD CAUSE INJURY.
- For cleaning, follow the instructions in section IX Cleaning and maintenance.
- Do not use this thermometer if it is damaged.
- Do not open up this thermometer. It contains small parts which might be swallowed by children.
- Do not expose the thermometer to water or other liquid, as it is not water resistant or waterproof.
- If an error occurs or if the device is damaged, DO NOT attempt to repair this device yourself, as this will void the warranty. Contact your dealer and only have repairs carried out by authorized service partners.
- Remove the batteries if you do not wish to use the unit for an extended period of time. Otherwise there is a danger that the batteries may leak.
- Keep the thermometer away from electromagnetic fields produced by objects such as microwave ovens, arc welders or induction heaters.
- A control measurement using a conventional thermometer is recommended in the following cases:
  - If the reading is surprisingly low.
  - For new-born infants up to 100 days old.
  - For children under three years of age who have a weakened immune system or who react unusually in the presence or absence of fever.
  - If you are using the thermometer for the first time or want to familiarise yourself with it.

### III. PRODUCT DESCRIPTION



- ① LCD display
- ② MODE button
- ③ Beep button
- ④ MEM button
- ⑤ Infrared sensor
- ⑥ On/Scan button
- ⑦ Battery compartment lid

Buttons	Functions
MODE	Set the measurement mode.
Beep	Turn on or off the beep.
MEM	Display of the saved measurements.
On/Scan	Switch on the device. Measure temperature.

### IV. HOW TO USE YOUR NON-CONTACT INFRARED THERMOMETER

- Install 2 AA batteries according to instructions provided in Section VII.
- For the first time use after installing batteries, wait 10-15 minutes for the device to warm up and adjust to the room temperature.
- Press On/Scan button, place 3-5 cm (1.2-2 in) away from forehead, aim lens toward forehead. Make sure the measurement mode is "BODY", press the thermometer's On/Scan button, and the temperature will be displayed instantly.
- Before taking an individual's temperature, make sure any hair, dirt or dust is removed from forehead and forehead is dry. Wait 10 minutes after such removal prior to measuring temperature.

**For reliable results:**

- Do NOT attempt to take an individual's temperature by aiming the device at a body part other than the forehead (i.e. arms, legs, torso, etc.).
- Do NOT move the thermometer before the final result is displayed.
- Do NOT take an individual's temperature near any drafts (i.e. wind, air conditioner, fans).
- Do NOT take an individual's temperature shortly after he or she participated in vigorous physical activity, bathed, took medicine, ate or drink, or had a cold or warm compress on his or her forehead.
- Do NOT take an individual's temperature when there has been a significant change in ambient conditions. Allow the device to adjust to a significant change in the ambient temperature due to a change in environment for 30 minutes before using the device.
- Wait at least 3 to 5 seconds between measurements.
- We recommend that you take three measurements on the forehead, and if the results of three measurements are different, use the one with the highest value.

### V. TURNING ON AND SETTING THE THERMOMETER

- Turning on the device. Press the "On/Scan" button. The display will illuminate, will enter the "Standby Mode" and will display "--C" or "--F". Next, place the device 3-5 cm (1.2-2 in) away from the individual's forehead, aim the sensor of the device toward the forehead, and press the "On/Scan" button again, which will then take the individual's temperature. The device will automatically shut off after 30 seconds of non-use.
- Setting the MODE when the device is on
  - Press "MODE" button, and the screen will display: Body...°C
  - Press again "MODE" button and the screen will display: Room...°C
  - Press again "MODE" button and the screen will display: SurfaceTemp...°C

**Note: The thermometer default is set to BODY mode.**

### IMPORTANT

The surface temperature differs from the body temperature. To obtain the body temperature must use the "BODY" mode. When measure the temperature of a baby-bottle or bath (by using the Surface Temp Mode), or room temperature (by using the Room Mode).

- Choosing the temperature unit. When the device is on, Press "MODE" button for 2 seconds, the screen will display "F1", then press "MODE" button to transfer between degree Celsius and Fahrenheit, Confirm by pressing "MEM" button.
- Alarm setup. When the device is on, Press "MODE" button for 2 seconds, the screen will display "F1", then press "MEM" button once, the screen will display "F2", press "MODE" button to choose the alarming temperature from 37.3°C to 39.1°C (99.1°F to 102.4°F). Confirm by pressing "MEM" button. **Note: The alarm threshold default value is 38°C (100.4°F)**
- When the device is on, Press "MEM" (Memory) button, which will then display the last temperature, and allows for a view of the last 32 measurements. In the switch on state, Press "MEM" button and hold for 5 seconds, all data in memory will be deleted. Then press "MEM" button again, the display will show "CL"
- When the device is on, press "Beep" to turn the buzzer on or off. When the screen shows "ON", the buzzer opened. When the screen shows "OFF", the buzzer closed.

**7. Recalibrating the device using the F4 MENU**  
**Instructions for recalibration:**  
When the device is on, Press "MODE" button for 2 seconds, the screen will display "F1", then press "MEM" button twice, the screen will display "F4", press "MODE" button to choose the Offset value from -3°C to 3°C (-5.4°F to 5.4°F). Confirm by pressing "MEM" button.  
Recalibrate the device after any seasonal or environmental changes, when you are using the device on people of different skin tones, or when you believe the device is not measuring the same temperature as a mercury thermometer.

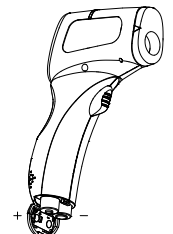
### VI. TECHNICAL SPECIFICATIONS

- Normal using condition
  - Ambient temperature: 10°C – 40°C (50°F – 104°F)
  - Relative humidity: less than 85%
  - Pressure altitude: 700 hPa to 1060 hPa
- Storage and shipping condition
  - Ambient temperature: -20°C – 55°C (-4°F – 131°F)
  - Relative humidity: less than 95%
  - Pressure altitude: 700 hPa to 1060 hPa
- Batteries: DC 3V (2 pcs AA batteries)
- Unit size: approx. 155(L) x 100 (W) x 40 (H) mm
- Unit weight (without battery): approx. 105g
- Temperature display resolution: 0.1°C (0.1°F)
- Measuring range:
  - In body mode: 32.0°C – 42.9°C (89.6°F – 109.2°F)
  - Under body mode, there is three color backlights:
    - Green color backlight: less than 37.3°C (99.1°F), means normal temperature.
    - Orange color backlight: 37.4°C – 37.9°C (99.3°F – 100.2°F), means may be low fever.
    - Red color backlight: more than 38°C (100.4°F), means may be high fever.
  - In surface temp mode: 0°C – 60°C (32°F – 140°F)
  - In room mode: 0°C – 40°C (32°F – 104°F)
- Accuracy:
  - 32.0°C – 34.9°C (89.6°F – 94.8°F) ±0.3°C(±0.6°F)
  - 35.0°C – 42.0°C (95°F – 107.6°F) ±0.2°C(±0.4°F)
  - 42.1°C – 42.9°C (107.8°F – 109.2°F) ±0.3°C(±0.6°F)
- Consumption: less than 300mW
- Measuring distance: 3cm – 5cm (1.2in – 2in)
- Automatic power-off: less than 30 secs
- Memory capacity: 32 readings
- Expiration date: For up to 5 years from the date of the manufacturing

**Note:** In the BODY mode, it can take temperature readings below 32°C or above 42.9°C (below 89.6°F or above 109.2°F), however, the temperature reading may be unreliable.

### VII. BATTERIES

**1. CHANGING THE BATTERIES**  
Under body mode, there is three color backlights: When the battery symbol flashes on the LCD display screen, the batteries need to be changed. To change the batteries, open the lid on the back of the device and ensure the batteries are positioned in the correct manner. Improperly installing the batteries could cause damage to the device. Do NOT use rechargeable batteries. Only use single-use batteries.



### 2. DISPOSING OF BATTERIES

To protect environment, dispose of empty batteries at appropriate collection sites according to national or local regulations.

**Notes on handling batteries**

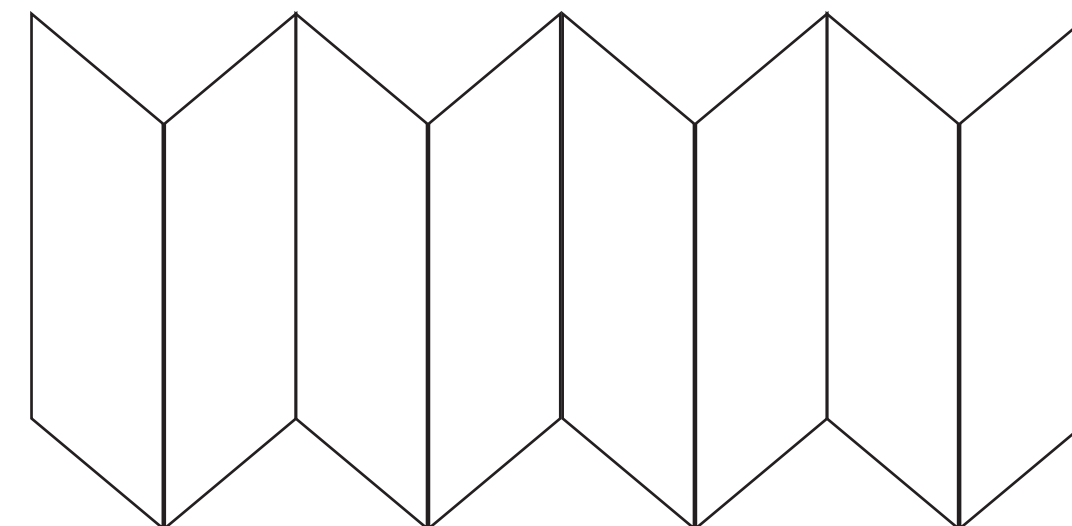
- If your skin or eyes come into contact with battery fluid, rinse the affected area with water and seek medical assistance.

**Checking hazard!** Small children may swallow and choke on batteries. Store batteries out of the reach of small children. If a battery has leaked, put on protective gloves and clean the battery compartment with a dry cloth. Protect batteries from excessive heat.

**Risk of explosion!** Do not throw batteries into a fire. Use identical or equivalent battery types only. Always replace all batteries at the same time. Do not use rechargeable batteries. Do not disassemble, split or crush the batteries.

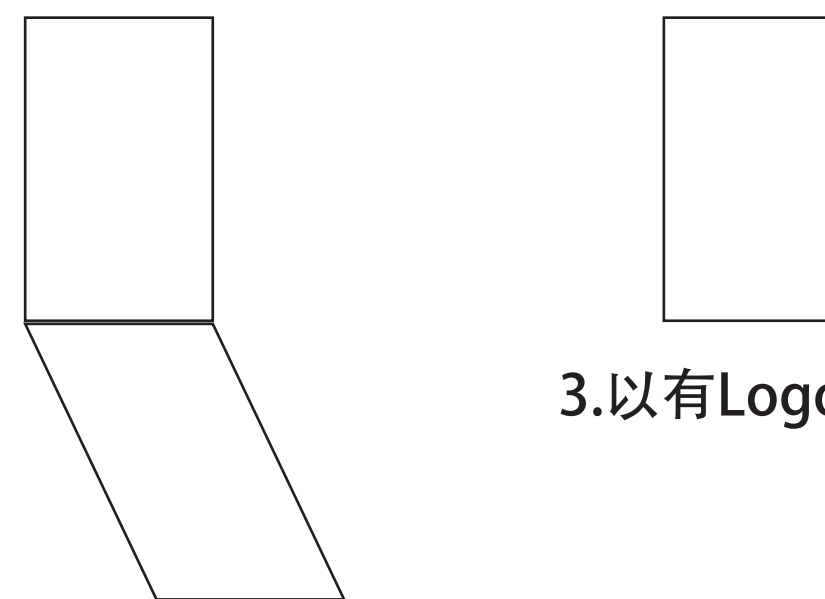
### IX. CLEANING AND MAINTENANCE

## 折叠方式:



1.7折8页

注: 折线不能折到文字



2.对折

3.以有Logo为正面

## 技术要求:

CE标识印刷出来的最小尺寸必需大于等于5mm。  
WEEE标识印刷出来的最小尺寸必需大于等于7mm。



材质: 普通纸, 正反黑白印刷;  
尺寸: 400x260mm; 7折8页,  
折叠后尺寸: 130x50mm

发放部门	研发工程部	装配车间	注塑车间	贴片车间	移印车间	品管部	国外市场部	国内市场部	物控部	仓库部	文控中心
------	-------	------	------	------	------	-----	-------	-------	-----	-----	------

产品编号 Item No.	JXB178+EAR04A	产品名称 Item Name	非接触式 红外体温计	日期 Date
材料 Material	普通纸	设计 Design		
公差 Tolerance	±1mm	审核 Check		
比例 Scale	1:1	批准 Approve		

版本 REV	描述 Description	签名 Sign	日期 Date
广州市倍尔康医疗器械有限公司 Guangzhou Berrcom Medical Device Co., Ltd			
零件名称 Part Name	<h1>说明书</h1>		
零件编号 Part No.	JXB178+007+2043	Unit:mm	REV:A0
		Page 1 of 2	

• Do not touch the glass of the infrared sensor with your fingers as it is extremely fragile and could cause injury. Protect it from dirt and damage. Clean the glass with a cotton ball that is lightly moistened with 95% Isopropyl Alcohol.  
 • Cleaning needs to be done regularly as needed.  
 • To clean the entire device, use a soft cloth slightly dampened with mild soapy water or 70% isopropyl alcohol. Under no circumstances may liquid enter the thermometer.  
 • Do not use the thermometer again until it is completely dry and keep it stand still at least 30 minutes.  
 • Never use aggressive cleaning agents, thinners, benzine or tough brushes.

**X. GUIDEINES**  
 This device complies with the Therapeutic Goods (Medical Devices) Regulations concerning medical products, the ISO 80601-2-56 and AS IEC 60601.1.2:2017 and is subject to particular precautions with regard to electromagnetic compatibility.

**XI. CLASSIFICATION**  
 1. Internally powered equipment;  
 2. Type Bf applied part;  
 3. IP22;  
 4. Sterilization or disinfection: N/A;  
 5. Category AP / APG equipment: N/A;  
 6. Continuous operation;

**XII. TROUBLESHOOTING**  
 If you have problems while using your thermometer, please refer to this guide to help resolve the problem. If the problem persists, please contact our customer service.

**THE SCREEN DISPLAYS TEMPERATURE HIGHER THAN 42.9°C (109.2°F):**  
 The temperature is in Fahrenheit. Change the measurement to Celsius.

**THE SCREEN DISPLAYS TEMPERATURE LOWER THAN 32°C (89.6°F):**  
 To take the surface temperature, press the "MODE" button and set to the reading called "Body". If the device is in Surface Temp Mode, the 89.6°F (32°C) temperature displayed is showing the external temperature of your body, rather than the internal.

**THE SCREEN DISPLAYS THE MESSAGE HI**  
 When using the Thermometer, the message "HI" can show on the screen. In this case, the temperature is above the measurement range selected, either above 42.9°C (109.2°F) in Body Mode.

**THE SCREEN DISPLAYS THE MESSAGE LO**  
 When using the Thermometer, the message "LO" can show on the screen. In this case, the temperature analyzed is under the measuring range selected, either less than 32°C (89.6°F) in Body Mode.

This message displays for various reasons. Please find below a list of the main issues:

Reasons for LO message display	Advice
Temperature reading hampered by hair or perspiration.	Make sure there is no obstruction or dampness prior to taking temperature.
Temperature hampered by an air draft or dramatic change in ambient temperature.	Make sure there is no air blowing in the area of use; this could affect the infrared reading.
Temperature readings are too close together, and the thermometer did not have time to reboot.	Wait a minimum of 3 to 5 seconds between readings; a 15 second pause is recommended
The measuring distance is too far.	Hold the device 1.2-2 inches (3-5 cm) away from forehead.

**XIII. SIGNS AND SYMBOLS**

Symbol	Description of symbol
	Trade mark
	Application part, Type BF
	Direct current
IP22	Protected against access to hazardous parts with a finger and against vertically falling water drops when enclosure tilted up to 15°
	Refer to instruction manual / booklet
	DISPOSAL: Do not dispose this product as unsorted municipal waste. Collection of such waste separately for special treatment is necessary.
	Manufacturer
	Serial number
	Country of manufacture and Date of manufacture

**XIV. EMC DECLARATION**  
 The ME EQUIPMENT or ME SYSTEM is suitable for home healthcare and clinic environments.  
**Warning:** Don't near active HF surgical equipment and the RF shielded room of an ME system for magnetic resonance imaging, where the intensity of EM disturbances is high.  
**Warning:** Use of this equipment adjacent to or stacked with other equipment should be avoided because it could result in improper operation. If such use is necessary, this equipment and the other equipment should be observed to verify that they are operating normally.  
**Warning:** Use of accessories, transducers and cables other than those specified or provided by the manufacturer of this equipment could result in increased electromagnetic emissions or decreased electromagnetic immunity of this equipment and result in improper operation.  
**Warning:** Portable RF communications equipment (including peripherals such as antenna cables and external antennas) should be used no closer than 30 cm (12 inches) to any part of the equipment, including cables specified by the manufacturer. Otherwise, degradation of the performance of this equipment could result.  
 1. All necessary instructions for maintaining BASIC SAFETY and ESSENTIAL PERFORMANCE with regard to electromagnetic disturbances for the excepted service life.  
 Portable and mobile RF communication equipment may affect the performance of the thermometer, avoiding strong electromagnetic interference when used, such as near mobile phones, microwave ovens, etc.  
 2. Guidance and manufacturer's declaration -electromagnetic emissions and Immunity

**Guidance and manufacturer's declaration -electromagnetic emissions and Immunity**  
 Table 1

Guidance and manufacturer's declaration - electromagnetic emissions	
Emissions test	Compliance
RF emissions CISPR 11	Group 1
RF emissions CISPR 11	Class B
Harmonic emissions IEC 61000-3-2	Not application
Voltage fluctuations/flicker emissions IEC 61000-3-3	Not application

Table 2

Guidance and manufacturer's declaration - electromagnetic immunity		
Immunity Test	IEC 60601-1-2 Test level	Compliance level
Electrostatic discharge (ESD) IEC 61000-4-2	±8 kV contact ±2 kV, ±4 kV, ±8 kV, ±15 kV air	±8 kV contact ±2 kV, ±4 kV, ±8 kV, ±15 kV air
Electrical fast transient/burst IEC 61000-4-4	Not application	Not application
Surge IEC 61000-4-5	Not application	Not application
Voltage dips, short interruptions and voltage variations on power supply input lines IEC 61000-4-11	Not application	Not application
Power frequency magnetic field IEC 61000-4-8	30 A/m 50Hz/60Hz	30 A/m 50Hz/60Hz
Conducted RF IEC61000-4-6	Not application	Not application
Radiated RF IEC61000-4-3	10 V/m 80 MHz – 2.7 GHz 80 % AM at 1 kHz	10 V/m 80 MHz – 2.7 GHz 80 % AM at 1 kHz

NOTE UT is the a.c. mains voltage prior to application of the test level.

Table 3

Guidance and manufacturer's declaration - electromagnetic immunity									
Radiated RF IEC61000-4-3 (Test specifications for ENCLOSURE PORT IMMUNITY to RF wireless communications equipment)	Test Frequency (MHz)	Band (MHz)	Service	Modulation	Modulation	Distance (m)	IMMUNITY TEST LEVEL (V/m)		
	385	380-390	TETRA 400	Pulse modulation 15 Hz	1.8	0.3	27		
	450	430-470	GMRS 460, FRS 460	FM ± 5 kHz deviation 1 kHz sine	2	0.3	28		
	710	704-787	LTE Band 13,17	Pulse modulation 217 Hz	0.2	0.3	9		
	745								
	780								
	810	800-960	GSM 800/900, TETRA 800, DEN 820, CDMA 850, LTE Band 5	Pulse modulation 16 Hz	2	0.3	28		
	870								
	930								
	1720	1700-1990	GSM 1900, CDMA 1900, GSM 1900, GECT, LTE Band 1, 3, 4, 25, UMTS	Pulse modulation 217 Hz	2	0.3	28		
	1845								
	1970								
	2450	2400-2570	Bluetooth, WLAN, 802.11 b/g/n, RFID 2450, LTE Band 7	Pulse modulation 217 Hz	2	0.3	28		
5240	5100-5800	WLAN 802.11 a/n	Pulse modulation 217 Hz	0.2	0.3	9			
5500									
5785									

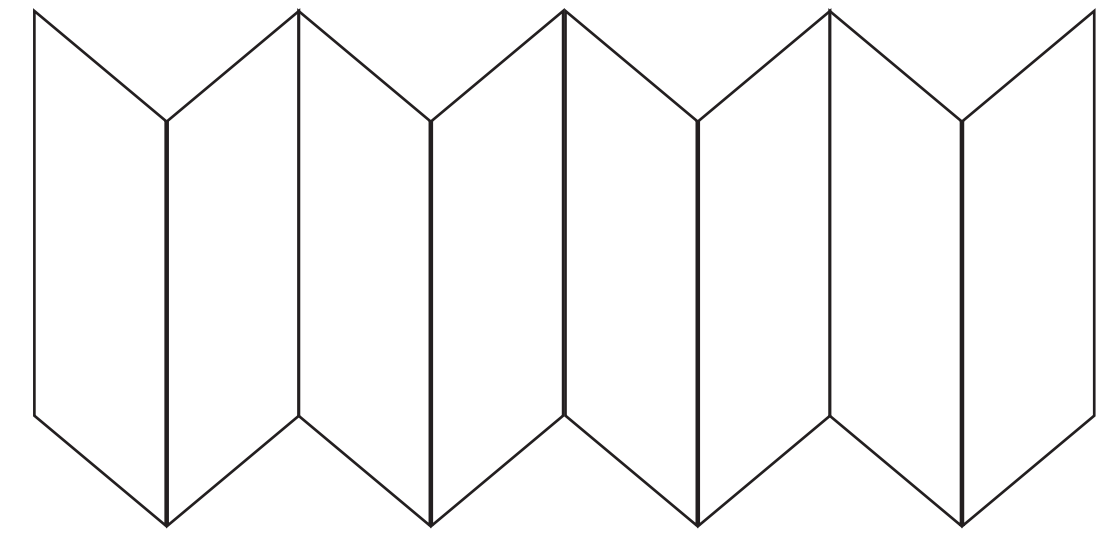
**UX**  
 URBANWORK

**AUSTRALIA SPONSOR & DISTRIBUTOR**  
 Ayonz Pty Ltd  
 Unit 40/11-21 Underwood Road, Homebush, NSW, 2140, Australia  
**SUPPORT: info@ayonz.com**

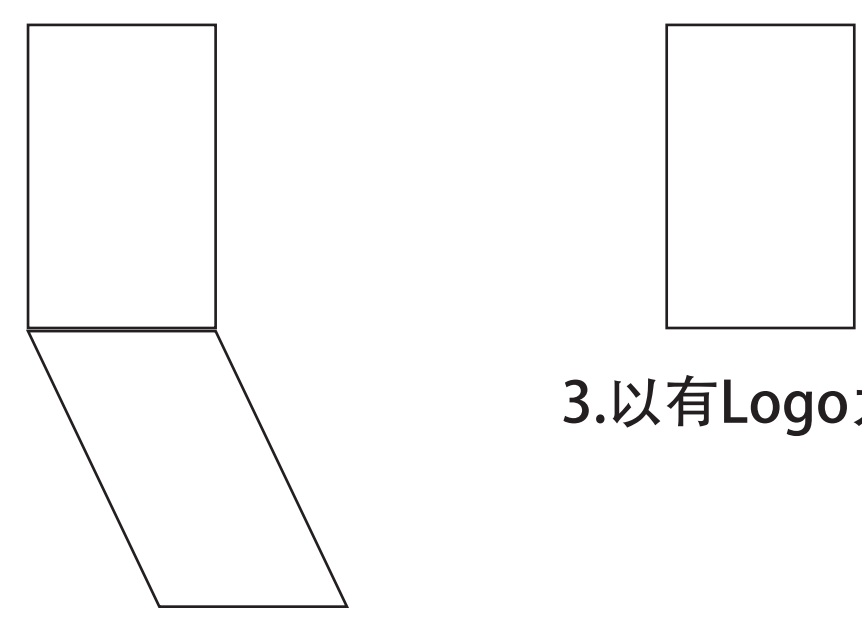
**PRODUCTION FACILITY**  
 Guangzhou Bercom Medical Device Co., Ltd.  
 No.38 Huanzhen Xi Road, Dagang Town, Nansha, 511470, Guangzhou, Guangdong, China  
**ARTG No. 376447**

Made in China

**折叠方式:**



1.7折8页  
 注:折线不能折到文字



2.对折

3.以有Logo为正面

**技术要求:**  
 CE标识印刷出来的最小尺寸必需大于等于5mm。  
 WEEE标识印刷出来的最小尺寸必需大于等于7mm。



**材质: 普通纸, 正反黑白印刷;**  
**尺寸: 400x260mm; 7折8页,**  
**折叠后尺寸: 130x50mm**

发放部门	研发工程部	装配车间	注塑车间	贴片车间	移印车间	品管部	国外市场部	国内市场部	物控部	仓库部	文控中心
------	-------	------	------	------	------	-----	-------	-------	-----	-----	------

产品编号 Item No.	JXB178+EAR04A	产品名称 Item Name	非接触式 红外体温计	日期 Date	
材料 Material	普通纸	设计 Design			
公差 Tolerance	±1mm	审核 Check			
比例 Scale	1:1	批准 Approve			

版本 REV	描述 Description	签名 Sign	日期 Date
广州市倍尔康医疗器械有限公司 <b>Guangzhou Bercom Medical Device Co., Ltd</b>			
零件名称 Part Name	<b>说明书</b>		
零件编号 Part No.	JXB178+007+2043		
	Unit:mm	REV:A0	
	Page 2 of 2		

