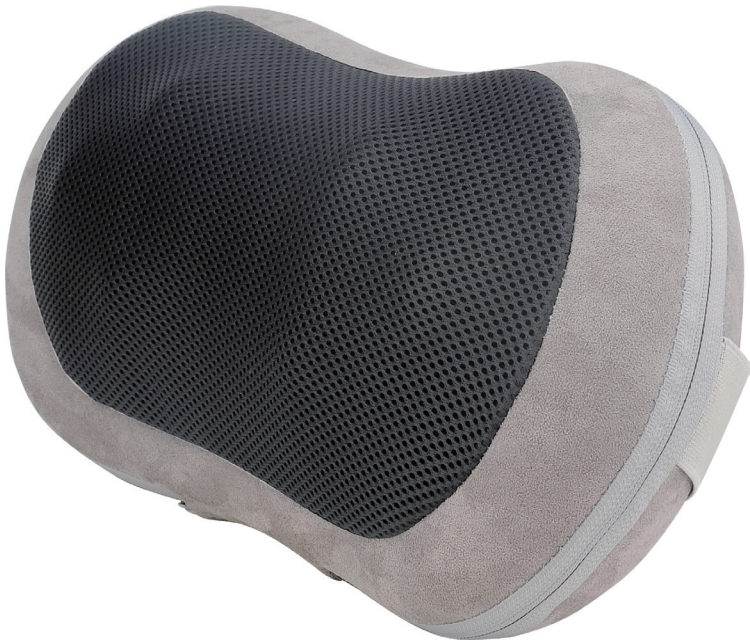


# URBANWORX

## **SHIATSU** MASSAGE CUSHION UX8SMC



## **INSTRUCTION MANUAL**

Please read this manual carefully before using, and keep it for future reference.



# CONTENTS

---

General Safety	4
Before first use	6
Product Overview	7
Basic Operation	8
Specification	10
Customer Support	Last Page

---

# GENERAL SAFETY

Read this manual thoroughly before you start using the massage cushion. Store this manual, the completed warranty card, your receipt and the product packaging.

The safety precautions instructions reduces the risk of fire, electric shock and injury when correctly complied to.

Please follow all instructions and take notice of all warnings.

## IMPORTANT INFORMATION

- Do not expose this product to rain or moisture as it may result in fire.
- Do not temper or change or modify the product in any way.
- Only use Accessories outlined and recommended by the manufacturer.
- Please do not expose the product to splashing or water contact

- The apparatus shall not be exposed to dripping or splashing and no objects filled with liquids, such as vases, shall be placed on the product. Dry location use only.
- No naked flame source, such as candles, should be placed on the product.

# GENERAL SAFETY (CONT.)

- If you notice any unusual odors or smoke around the unit, immediately disconnect the unit from the outlet and contact the service center. Failure to do so may result in fire or electric shock.
- When not using the unit for long periods of time or when you are moving the unit. Please disconnect the product from main power.
- Please beware that Dust could accumulate over time on the unit and cause it to generate heat and or deteriorate insulation, which in turn may result in an electrical fire.
- The product is not intended for use by persons (including children) with reduced physical, sensory or mental capabilities, or young children of any age, They must be supervised product by a person responsible for their safety.
- To maintain the product do not use any chemical or cleaning agent or wet cloth, please only ensure to utilize a dry cloth to wipe it down from marks or dust and only after unplugging the product from the power socket.
- Please ensure to contact our call center for any repair or service required for the products.

## **Please make sure upon positioning this product, the place is:**

- Not wet or damp and Well ventilated
- Away from direct sunlight or heaters.
- Away from splashes or food.
- Protected from excessive dust or grease.
- Do not place this equipment in a confined space such as a bookcase or similar unit. Allow 20cm above and 5cm spacing on both sides for proper ventilation.
- Do not place the Product near heat sources such as radiators, stoves or other audio visual equipment that produce heat.
- Do not place small metallic objects on top of the unit.
- Do not use or store flammable or combustible materials near the unit. Doing so may result in fire or explosion. Do not place any naked flame sources, such as lit candles, cigarettes or incense sticks on top of the product.

# GENERAL SAFETY (CONT.)

## Before first use

- Unpack the massage cushion and accessories and ensure all parts of the product are undamaged and in good working order.
- Plastic wrapping can be a suffocation hazard for babies and young children, so ensure all packaging materials are out of their reach and disposed of safely.
- Unwind the power adaptor cord to its full length and inspect it for damage before each use. Do not use the product if it or its cord has been damaged or is not working properly. In case of damage, contact our after sales support line for advice on examination, repair or return of the damaged product.
- Do not use the massager in a bathroom or a similarly humid area as such an environment may reduce the lifespan of the massager mechanism.
- Ensure the massager is not exposed to direct sunlight or placed near a heater or other heat source.
- Your massager comes pre-assembled, so you can plug it in and use it straight away.

## Consult your doctor prior to using if:

- you are pregnant
- you have a cardiac pacemaker, artificial joints or electronic implants
- you suffer from one or more of the following illnesses and complaints: circulation disorders, varicose veins, open wounds, bruises, broken skin, inflammation of the veins, skin eruptions.

## Do not use this product:

- To supplement or replace medical treatment. Chronic complaints and symptoms may be made worse.
- If you have circulatory problems or on areas sensitive to heat.  
Risk of burning!

## CAUTION!

- This product is a non-professional appliance designed to provide a soothing massage. Do not use this product as a substitute for medical attention. If you have any concerns regarding your health, consult your doctor before using the product.
- Never use this massager if you suffer from any physical ailment that would limit your capacity to operate the controls or if you have sensory deficiencies.
- The appliance has a heated surface. Persons insensitive to heat must be careful when using the appliance.

# PRODUCT OVERVIEW

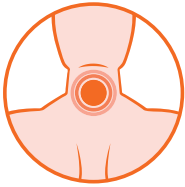


1. Rotation Massage Balls
2. Elastic Rear Strap
3. Operation Switch
4. Cord and Connector for Power Adaptor
5. Power Adaptor

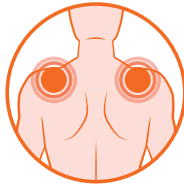
# BASIC OPERATION

- This cushion is suitable for massaging your back or neck as indicated on the giftbox.

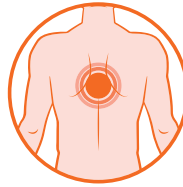
## SUITABLE FOR MULTIPLE AREAS:



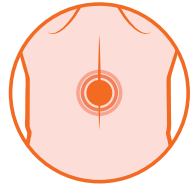
NECK



SHOULDERS

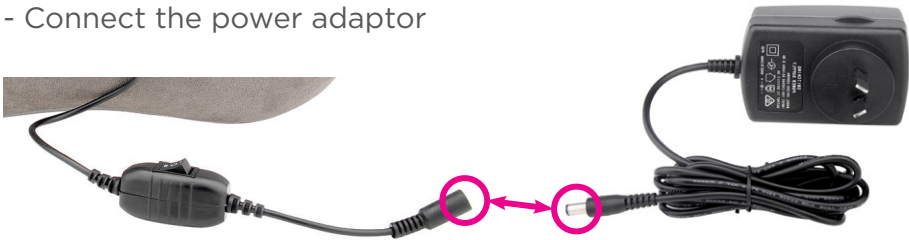


BACK



LOWER BACK

- Guide the elastic strap around the back of the seat.
- Connect the power adaptor



- Sit down on the chair, making sure the massage cushion is placed at the height you want the massage.
- **Operation switch has three settings:**
  - - Off
  - I - Start Massage balls with heat will turn one direction. (15 mins)
  - II - Massage balls with heat will turn in other direction. (15 mins)

**Automatic Shut Off** - For safety, the massage cushion will turn off automatically after 15 minutes of use.



# INFORMATION

## Maintenance

- Massage cushion is easy to clean. Store it in its original box or within storage container to keep dust accumulation to a minimum.
- Remove dust with a vacuum cleaner or duster.
- Never use cleaners chemicals, hard brushes.

## CAUTION!

- Disconnect from the power supply before cleaning.
- Do not allow water or any other liquids to come into contact with the unit.
- Do not clean with any liquids.

## Troubleshooting

If your massage cushion stops working, make sure the power adaptor is properly connected. If unit is still not working, contact our call centre at [info@ayonz.com](mailto:info@ayonz.com).

**Do not attempt to open and repair the unit yourself.**

# SPECIFICATIONS

<b>Rated power</b>	12VDC 2A 24W
<b>Weights</b>	Net: 1.2 kg / Gross: 1.45 kg
<b>Dimensions</b>	345 (w) x 177 (d) x 115 (h) mm

This appliance has been fully tested and meets all requirements as set out by standards AS/NZS 60335.1 and AS/NZS 60335.2.32 for electrical safety.



# URBANWORX

**CUSTOMER HELPLINE:**

[info@ayonz.com](mailto:info@ayonz.com)

**DISTRIBUTED BY:**

Ayonz Pty Ltd