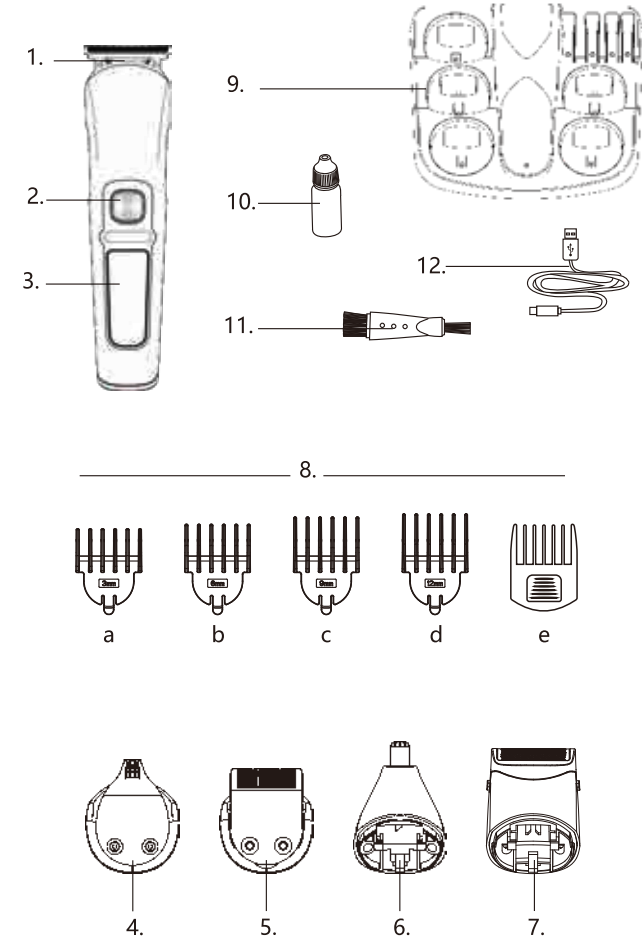


105g铜板纸 双面印刷 压折痕

URBANWORX
SUPPORT info@ayonz.com
GROOMING KIT
UXMGK
INSTRUCTION MANUAL



Our products are designed to meet the highest standard of quality, functionality and design. We hope you enjoy using your new appliance. Please read the instructions for use carefully and keep in a safe place for future reference.

CAUTION

Use this appliance only for its intended use as described in this manual.

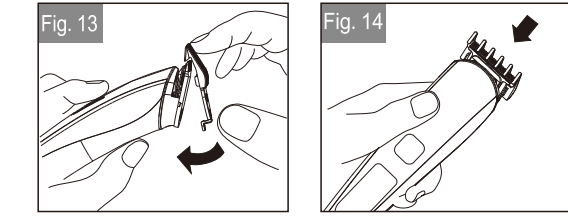
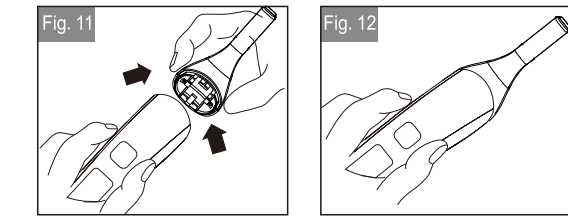
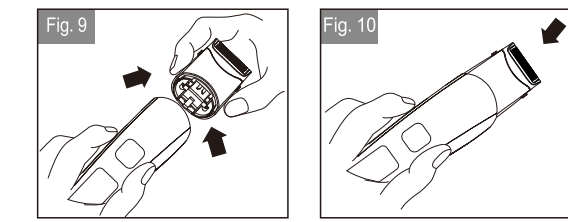
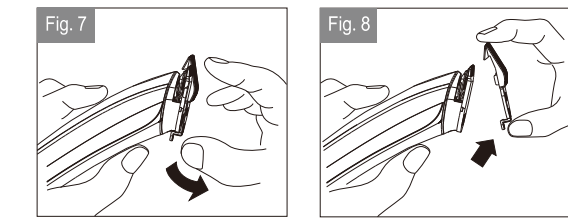
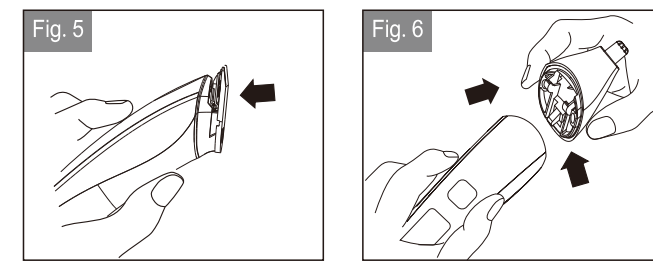
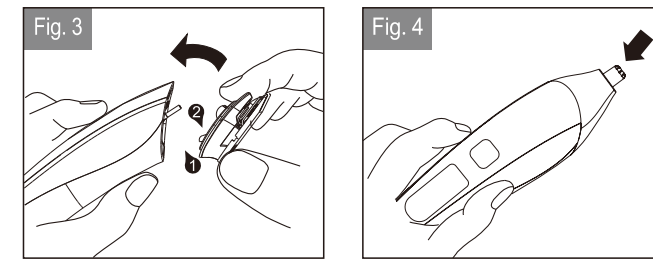
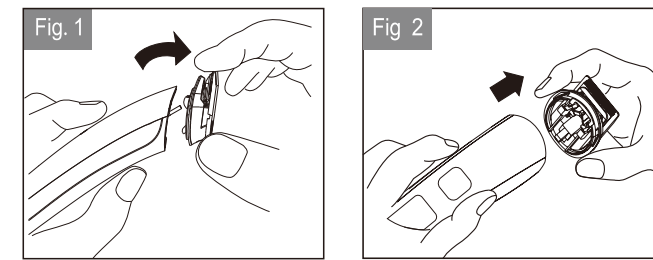
DESCRIPTION

- | | |
|---------------------------------------|---|
| 1. full size trimmer | 8. 5 guide combs a-e, for full size trimmer |
| 2. ON/OFF switch | 9. stand base |
| 3. Intelligent digital display screen | 10. lubricating oil |
| 4. design trimmer | 11. cleaning brush |
| 5. precision trimmer | 12. USB cable |
| 6. Nose/ear trimmer | |
| 7. micro shaver | |

specification

Products: intelligent body care kit
Battery type: li-ion battery
Charging time: 2 hours
Use time: 80 minutes
Input: DC 5V 1A

Rated power: 5W
Production date:
please see the product body



GETTING STARTED

- Charging your personal groomer
Before using your personal groomer for the first time, charge for 2 hours.
- Ensure the product is switched off.
- Connect the USB cable to a 5VDC 1A power supply and then to the product USB Port. The charging indicator will light up.
- Your personal groomer cannot be overcharged. However, if the product is not going to be used for an extended period time(2-3months), unplug it and store it. Fully recharge your personal groomer when you would like to use it again.
- To preserve the life of your batteries, let them run out every 6 months then recharge for 14-16 hours.

HOW TO MATCH THE APPLIANCE

- Ways of matching appliance
- When changing the parts, first use the finger put the apt in the right position, put the heads parts directing to the body align with the lock and press the parts (fig. 3-4).
- Remove out the heads parts as picture. (fig.1-2)
- Match the full size trimmer positioning comb from front to back balancelly till lock with heads parts. (fig.3,5)
- There are four positioning combs with four levels as below.

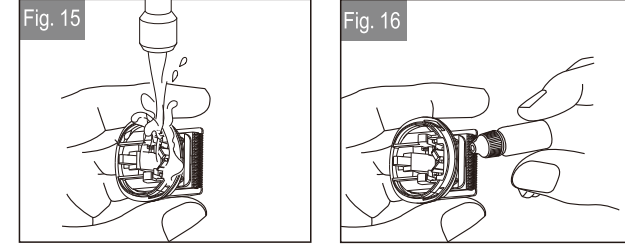
Ways of matching full size trimmer comb

| No. | Level | Length(mm) |
|-----|-------|------------|
| 1 | 1 | 3 |
| 2 | 2 | 6 |
| 3 | 3 | 9 |
| 4 | 4 | 12 |

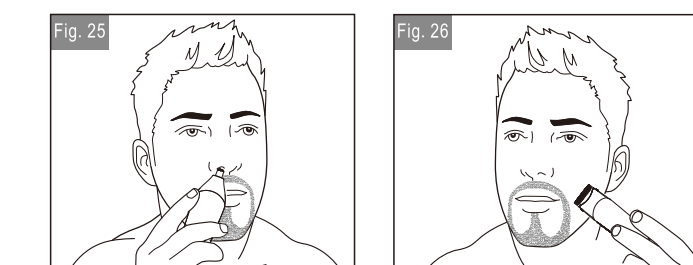
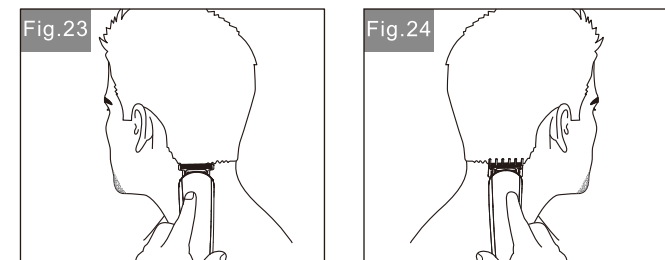
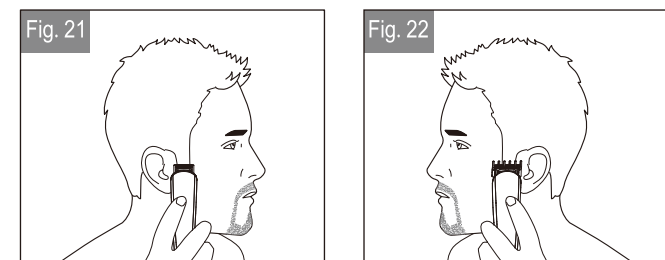
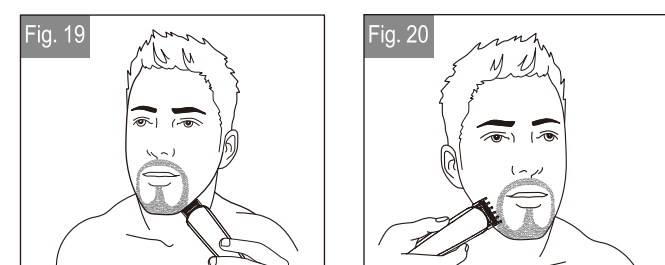
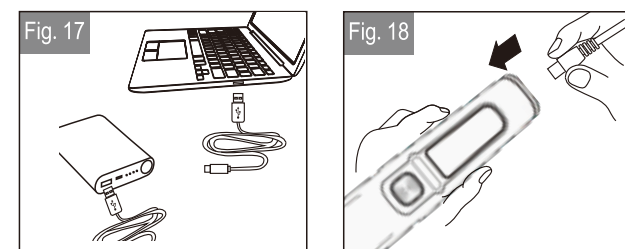
Ways of matching precision trimmer comb

| No. | Level | Length(mm) |
|-----|-------|------------|
| 1 | 1 | 1 |
| 2 | 2 | 2 |
| 3 | 3 | 3 |
| 4 | 4 | 4 |

- Remove out the positioning combs from back to front as picture.(fig.7-8)
- Press the two sides of the micro shaver/body trimmer attachment and remove out from the body.(fig.9/11)
- Press the two sides of the micro shaver/body trimmer attachment and insert to the body. (fig.10/12)
- Match the precision trimmer positioning comb from up to down balancelly till lock with heads parts(fig.13)
- Choose different 4 levels positions for precision trimmer positioning comb from up and down.(fig.14)
- Ways of cleaning the appliance
- When cleaning the appliance, just separate the appliance, as the pic shows. Then use the cleaning brush, clear the dust by cleaning the inside parts. (fig.15-16)



- Ways of cleaning the appliance
- Use cable charge and very convenient.(fig.17)
- Insert the appliance plug directly into the body.(fig.18)



HOW TO USE

- To define the beard/moustache line(fig.19-20)
 - Hold the personal groomer with precision trimmer blade facing you.
 - Start with edge of beard/moustache line and gently lower the trimmer blade onto your skin. Use motions towards edge of beard/moustache line to trim to desired locations in facial area and away from beard in neck area
- Trimming edge of sideburns(fig.21-22)
 - Hold the personal groomer with precision trimmer blade facing you.
 - Start with edge of sideburn, and with the trimmer blades resting lightly against your skin, use motions towards edge of sideburn line to trim to desired locations in facial area.
- To thin and taper the beard/moustache(fig.23-24)
 - Attach a guide comb to full size trimmer. If you are trimmer for the first time start with the maximum trimming length setting.
 - Turn the unit on.
 - Place the flat top of the trimmer comb against the skin.
 - Slowly slide the personal groomer through the hair. Repeat from different directions as necessary.
 - If hair builds up in the trimmer comb during the trimming process, switch the unit off, pull off the comb and brush/rinse off.

- To remove hair from nose and ear(fig.25)
 - Attach nose trimmer attachment.
 - Insert the personal groomer gently into nostril or ear.
 - Gently move the groomer in and out of the nostril or ear and at the same time rotate.
 - Avoid inserting the cutting unit more than 6mm into your nostril or ear.
- Using the micro shaver trimmer(fig.26)
 - Attach the micro shaver trimmer
 - Hold the groomer so the micro shaver gently touches your face in a 45 degree angle.
 - Use short, well-controlled movements to shave around your beard/moustache. Use your free hand to stretch your skin. This encourages the hair to stand upright, making it easier to shave.

- Attaching and removing the trimmer comb attachment
Note: always ensure the personal groomer is switched off before changing any attachments.
- Tips for best results
 - Beard, moustache and sideburn hairs should be dry.
 - Avoid using lotions before using your personal groomer. Comb your hair in the direction that it grows.
 - Remove trimmer comb attachment if you are: defining hairline edges such as sideburns, trimming the nape of your neck, trimming your beard line on front of neck.

CARE FOR YOUR PERSONAL GROOMER

- Cleaning and maintaining your personal groomer
- After each use
 - Turn the personal groomer off.
 - Gently brush the remaining hairs away/rinse under warm water from the guide comb and trimmer blade.
 - Cleaning cautions
 - Only the guide comb attachment and trimmer blade may be removed from the product for cleaning.
 - Cleaning should only be done with a soft brush, such as the brush supplied with the product.
 - Only use the light-grade oil supplied or sewing machine oil on the blades.
 - Do not use harsh or corrosive cleaners on the units or their blades.
 - The product can be washed all over the body, but please clean the water droplets at the charging place before charging to avoid accidents
 - Storage
 - Always store this appliance and cord in a moisture-free area. Do not store it in temperatures exceeding 140 f (60°C).
 - Do not wrap the USB Cable around the appliance.

IMPORTANT SAFETY INSTRUCTIONS

- Warning to reduce the risk of burns, electrocution, fire, or injury to persons:
- Keep the cord away from heated surfaces.
 - Make sure the cord do not get wet.
 - Do not plug or unplug the product with wet hands.
 - Do not use the product with a damaged cord. A replacement can be obtained via our international service centers.
 - Charge, use and store the product at a temperature between 15°C and 35°C.
 - Only use the parts supplied with the appliance.

- Keep this product out of reach of children. The use of this appliance by persons With reduced physical, sensory or mental capabilities or lack of experience and Knowledge can give cause to hazards. Persons responsible for their safety Should give explicit instructions or supervise the use of the appliance.

PROTECT THE ENVIRONMENT

- Do not dispose the trimmer in household waste at the end of its useful life. Disposal can take place at our service centers or appropriate collection sites.
- Caution: do not put in fire or mutilate your battery packs they may burst or release toxic material.
- Do not throw away the appliance with the normal household waste at the end Of it's life, but hand it in at an official collection point for recycling. By doing This, you help to preserve the environment(fig.27)

URBANWORX

SUPPORT info@ayonz.com / DISTRIBUTOR Ayonz Pty Ltd